

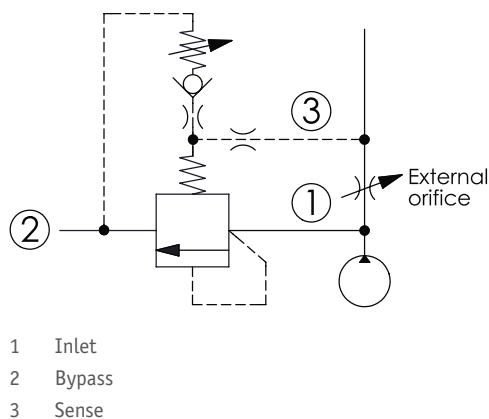
CRV-17A - Relief valve

Modulating element with relief function

1 Available versions

Ordering example:

CRV-17A	-3B	-A	-L
Type	Operation	Spring	Option



Operation

Coding	Description
3B	Piston without orifice compensating pressure is 8 bar

Spring

Coding	Pressure (bar)	
	Adjustment range	Standard setting
A	7 - 210	70
B	10.5 - 105	70
C	10.5 - 420	70
W	10.5 - 315	70

Option

Coding	Option	Drawing
L	Leakproof hex socket screw	
K	Handknob with lock knob	
C	Stainless steel tamper resistant cover	

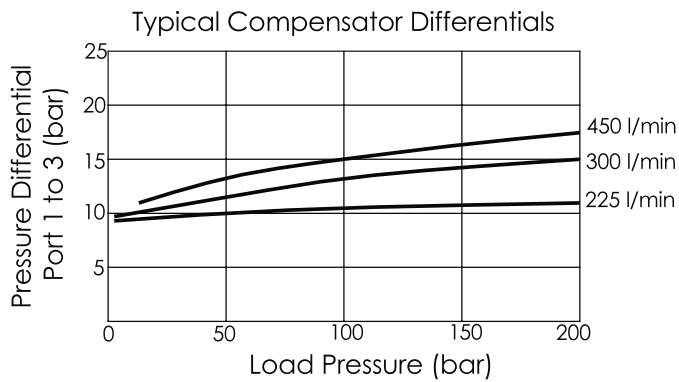
2 Technical data

Operating pressure p_{max}	350 bar
Flow rate Q_{max}	160 l/min
Installation torque	200 - 215 Nm
Cavity	T-17A
Weight	L: 0.62 kg

i INFORMATION

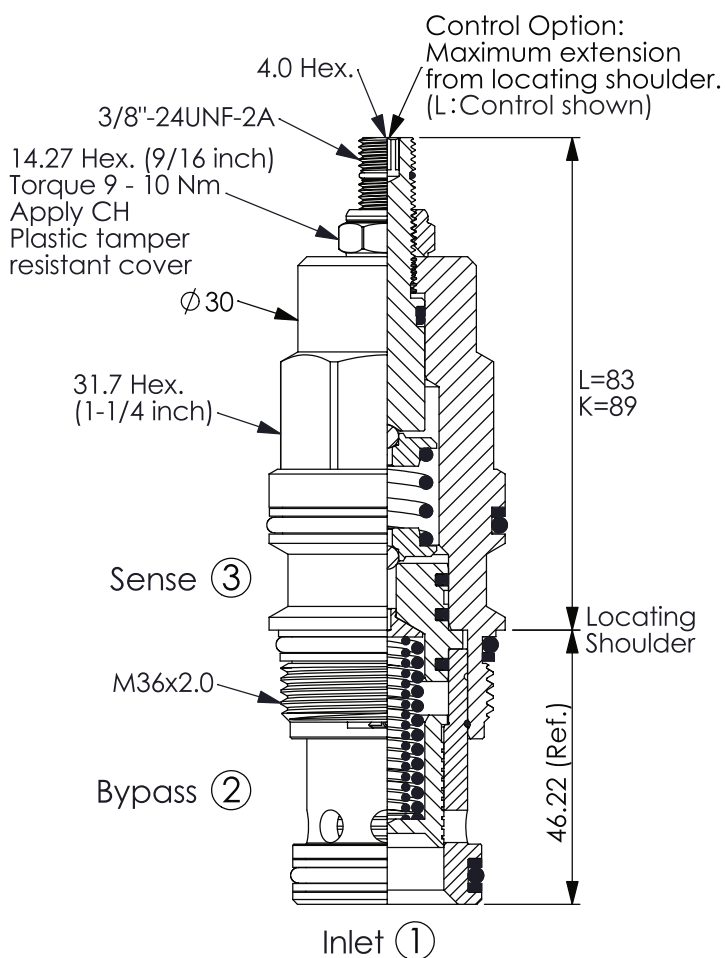
- Response time-typical (10 ms)
- Maximum leakage approximately (60 cm³/min/70 bar)

Characteristic lines



3 Dimensions

All dimensions in mm, subject to change.



4 Other information

see Technical information HAWE cartridge valves: D 8219

see Recommendation for hydraulic fluid: D 5488/1

